

# WELCOME TO GATTEFOSSÉ





# WHO WE ARE?

B2B independent family-run company serving the personal care & pharmaceutical industries since 1880

We develop, manufacture and sell specialty ingredients

Pharmaceuticals: lipid functional excipients

Personal care: actives, extracts and textures





# OUR EXPERTISE

## Industrial operations

A solid know-how, and a constant commitment to quality

## Regulatory affairs

A dedicated team to guarantee product compliance with regulations

## Applications

Four technical centers of excellence to lead internal research projects and provide customized technical support



## Plant extraction

High-quality actives and extracts using various extraction processes

## Lipid chemistry

Functional ingredients for the personal care and pharmaceutical industries

## Skin biology

A dedicated laboratory working on cell culture models

# PERSONAL CARE



## ACTIVES

Actives of natural origin  
Developed for high efficacy  
formulations

Different claims:

- Anti-wrinkles
- Complexion
- Energizing
- Moisturizing and repairing
- Protection...



## EXTRACTS

Increase efficacy and deliver a strong  
activity boost in formulations

Wide range of fruit and plant species



## TEXTURES

Sensorial emulsifiers, texture agents,  
and emollients

Creation of innovative textures  
and varied formulations

Supported by our application  
laboratories and in-house sensory panel  
(since 1996)



# WAX BUTTER TECHNOLOGY

## EMULSIFYING AGENTS & TEXTURISING AGENTS



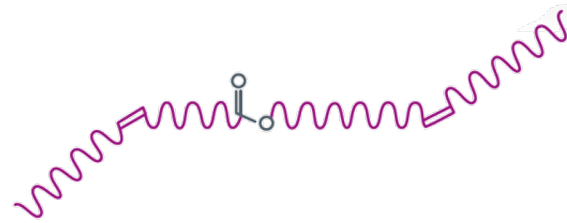
# INPUTS OF OUR REACTION

## Solid waxes



Bring saturated esters

## Jojoba wax

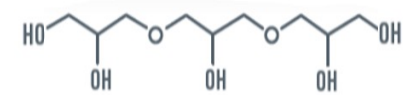


Brings unsaturated esters

Some (beeswax, candelilla wax) also bring free fatty acids, fatty alcohols, and other inert components (hydrocarbons, etc)



## Polyglycerol-3

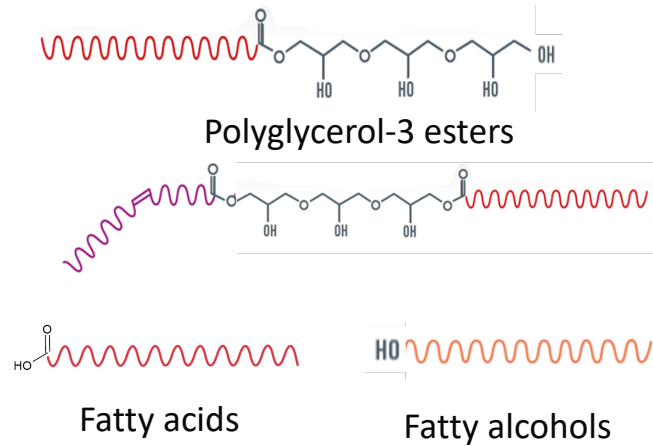


Acts as an intermediate of reaction to favor the creation of these new, sensorial esters

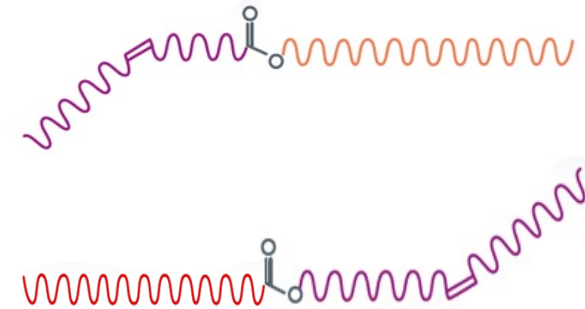
# AT THE END OF OUR REACTION

New entities created through transesterification:

## Amphiphilic compounds



## Mixed esters, also called jojoba esters



# MOLECULES OF INTEREST

## ■ Amphiphilic molecules:

- Can act as a stabilizers for W/O and O/W emulsions
- Improve stability

## ■ New esters:

- Bring new sensation / texture – improved sensoriality
- Improve compatibility



**Amphiphilic  
compounds**

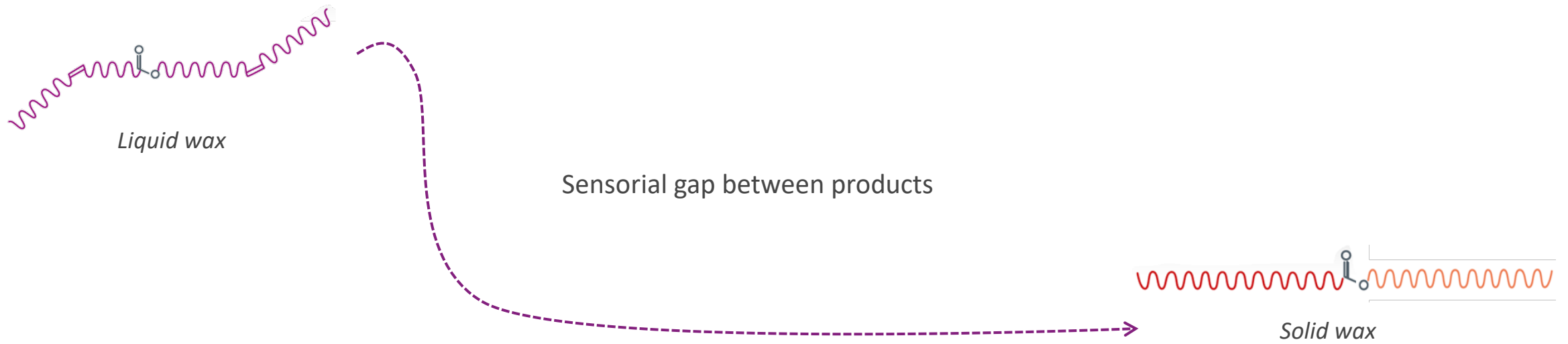


**New esters**

Increased stability of emulsions and anhydrous systems.

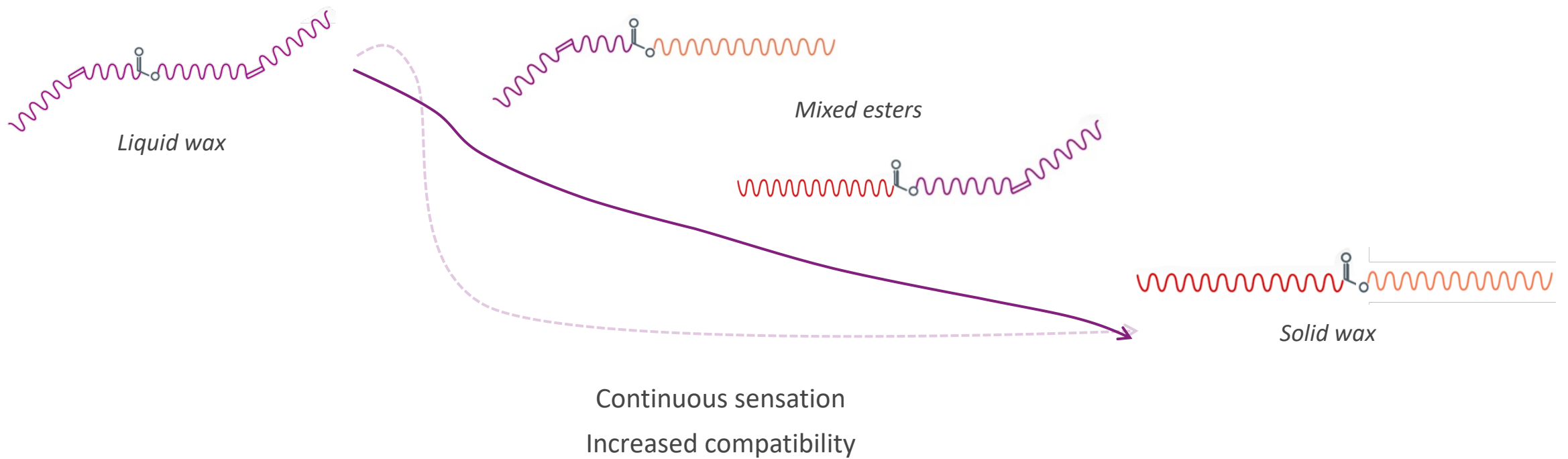
# BENEFITS

Before transesterification

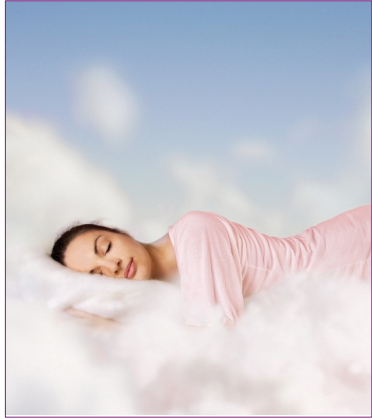


# BENEFITS

After transesterification



# GATTEFOSSÉ'S NATURAL EMULSIFIERS



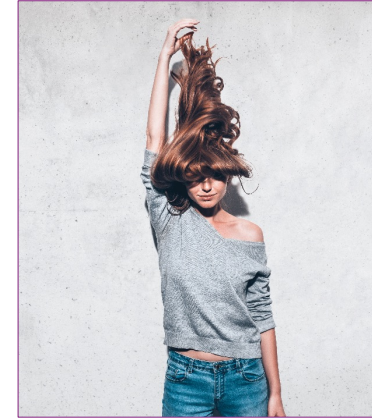
Emulium® Kappa MB



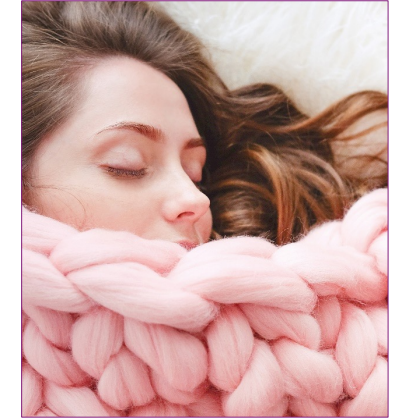
Acticire® MB



Emulium® Mellifera MB



Definicire®



Emulium® Dolcea MB

# THANK YOU QUESTIONS?

NEELAM MOMIN

Technical Account Manager – Personal Care

[neelamm@gattefosse.ca](mailto:neelamm@gattefosse.ca)

T - +14375512386

